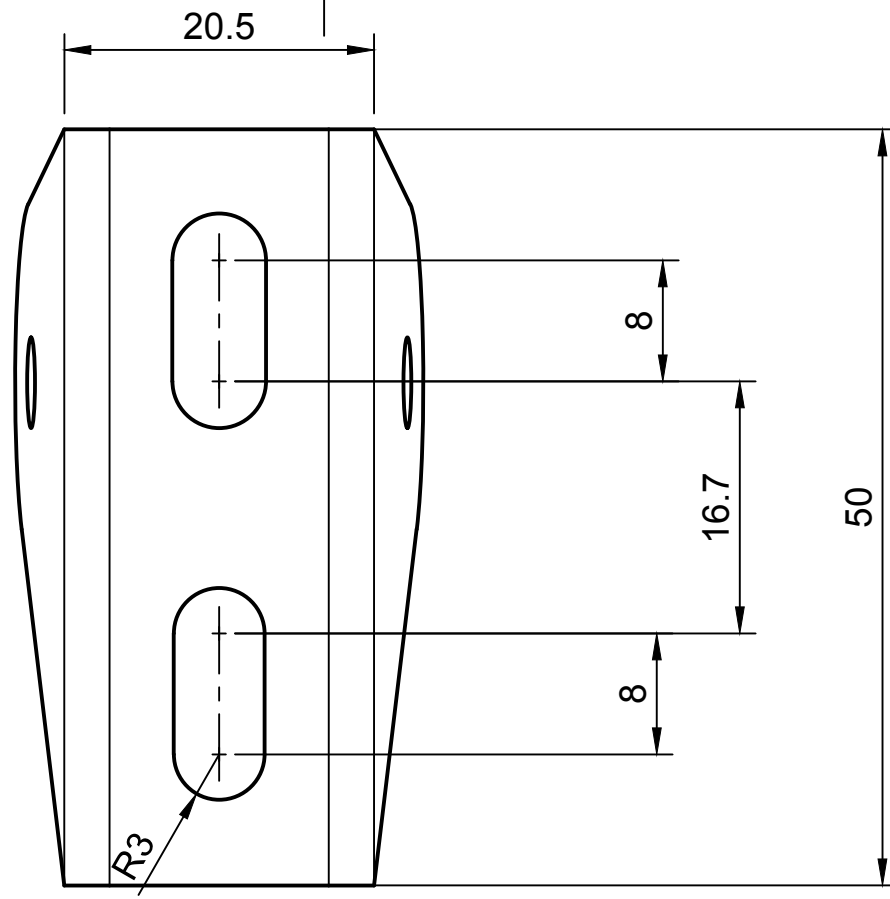
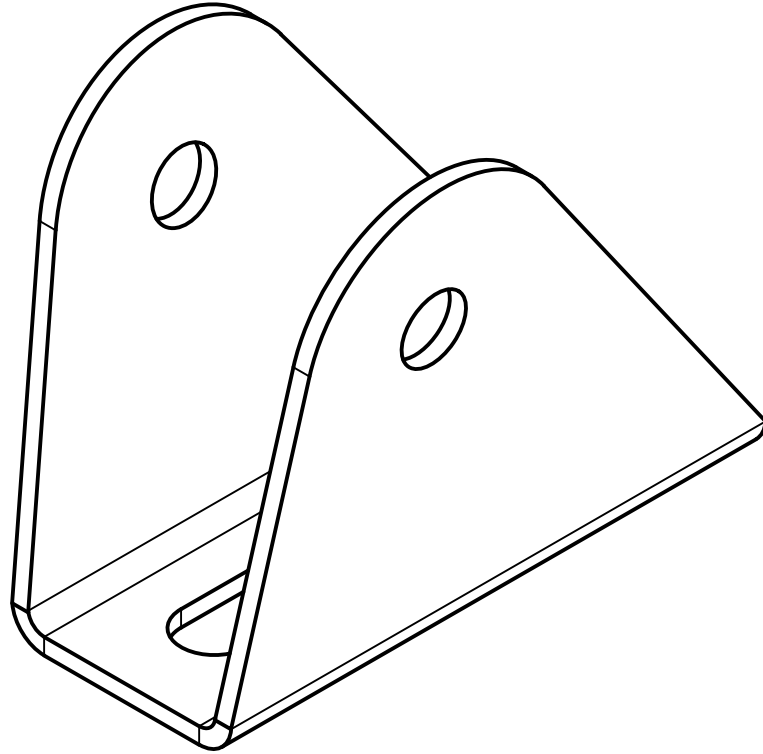


1 2 3 4 5 6 7 8

A
B
C
D
E
F

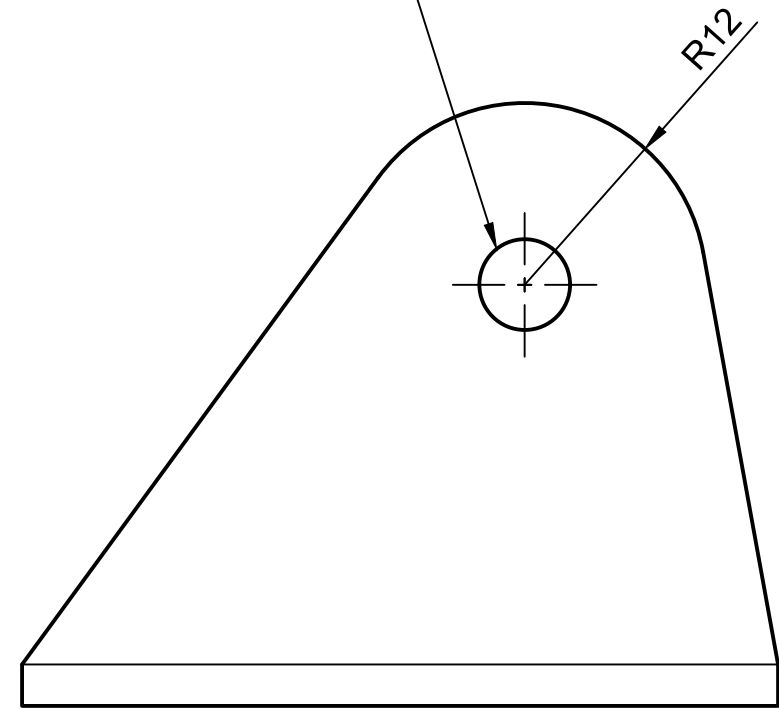
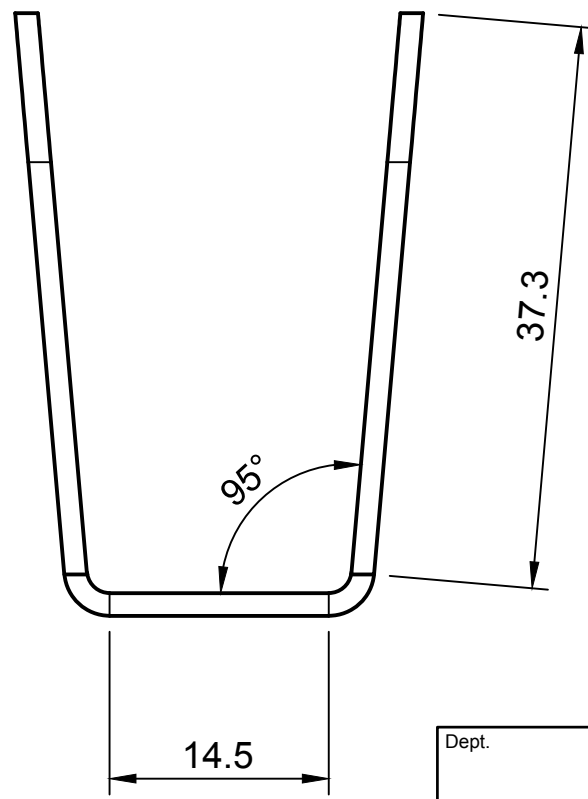


Pletina AISI 316

Ángulo pliege a revisar con pieza proporcionada

Diámetro agujero del pasador a revisar con pieza proporcionada

Para pasador con resorte de 6.5mm



Dept.	Technical reference	Created by Óscar González 8/10/23	Approved by	
		Document type	Document status	
		Title Flange 316	DWG No.	
Rev.	Date of issue	Sheet	1/1	

1 2 3 4 5 6 7 8